

Notes

1. Net weight

Without Thermostat or Disconnect Switch
15 & 20 kW = 176 lbs (79.8 kg)

Net Weight Adders
Thermostat = 7 lbs (3.1 kg)
Disconnect Switch = 11 lbs (4.9 kg)

2. Shipping Weight

Without Thermostat or Disconnect Switch
15 & 20 kW = 239 lbs (108.4 kg)

Ship Weight Adders
Thermostat = 7 lbs (3.1 kg)
Disconnect Switch = 11 lbs (4.9 kg)

3. Ambient Temperature Limits and Altitude

Operating: **Gas:** -40°C ≤ Tamb ≤ +40°C
Storage: -50°C to +60°C
Maximum Altitude: 3000 m ASL

4. Air Delivery

15 kW = 2039 m³/hr
20 kW = 2888 m³/hr

5. Hazardous Location Classification

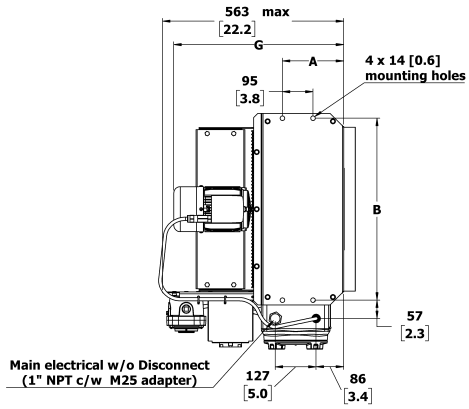
Ⓒ2813 Ⓔ II 2G, Ex db h IIB T4 Gb IP55 (ATEX)
Ex d IIB T4 Gb IP55 (IECEX)
Ⓔ II 2G, Ex db h IIB T4 Gb IP55 (UKEX)
(Suitable for ATEX/IECEX/UKEX Zone 1 & 2)

6. Materials

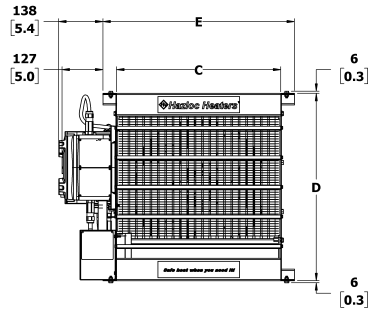
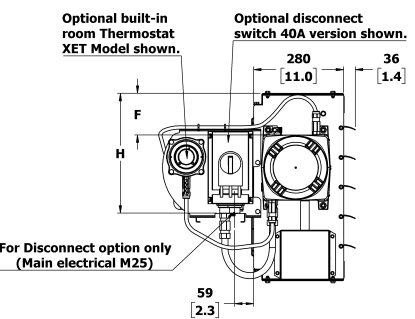
Cabinet: 14 Ga, Yellow Epoxy/Polyester Powder Coated
Core: Carbon Steel with Copper-free Integral Aluminum Fins Coated with Black, High Heat Enamel
(Heresite coated core and/or cabinet available)

Table 1 Specifications for AEU1 Heater, 16" Fan Size

KW	Line Volt	PH	Hz	Fan Dia. (inch)	Total Amps	Minimum Circuit Ampacity	Max Fuse Size	Supply Wire 90°C mm ² (AWG)	BASE MODEL	Optional Built-in Thermostat (circle one)	Built-in Disconnect Switch <input checked="" type="checkbox"/>	Continuous Fan <input checked="" type="checkbox"/>
15	230	3	50	16	39.2	49.0	50	8.36 (8)	AEU1-G-16-150-230350-B	None or T1 or T2	(not available)	
	400	3	50		22.7	28.4	30	5.26 (10)	AEU1-G-16-150-400350-B	None or T1 or T2		
	480	3	60		19.1	23.9	25	5.26 (10)	AEU1-G-16-150-480360-B	None or T1 or T2		
20	400	3	50	16	29.9	37.4	40	8.36 (8)	AEU1-G-16-200-400350-B	None or T1 or T2		
	480	3	60		25.1	31.4	35	8.36 (8)	AEU1-G-16-200-480360-B	None or T1 or T2		



Heater Size	16 (15-20kW)
Dim.	Inches (mm)
A	7.5 (191)
B	22.3 (566)
C	20.3 (515)
D	23.0 (583)
E	23.5 (596)
F	5.1 (130)
G	20.8 (528)
H	14.7 (373)



Heater Model Code & Option Codes

Model Code
AEU 1 - G - 16 - 150 - 400 3 50 - B - Y - B

Option Codes
T1, D2, etc. (stamped on separate field of data plate)

Model Series
AEU 1

Generation
For major revisions
G

Flammable Substance
Gas G

Fan Size
16" (406 mm) 16

Power Output
15 kW 150
20 kW 200

Heater Line Voltage
230 Volts¹ 230 @ 50Hz only
400 Volts² 400 @ 50Hz only
480 Volts³ 480 @ 60Hz only

Option Codes
(stamped on separate field of data plate)

Product Revision No.
For minor revisions
B

Factory Built-in Options
N No options selected
Y Yes, options selected

Option Codes
(stamped on separate field of data plate)

T1 Thermostat, Bi-metal (BTX1)
T2 Thermostat, Electronic (XET1)
D2 Disconnect switch, 20A
D4 Disconnect switch, 40A
F Continuous fan
H1 Heresite Core
H2 Heresite Cabinet
H3 Heresite Core/Cabinet

Includes louvers and fan
Includes louvers and fan

Control Voltage
B 24VAC

Frequency
50 50Hz
60 60Hz
@230 & 400 Volts only
@480 Volts only

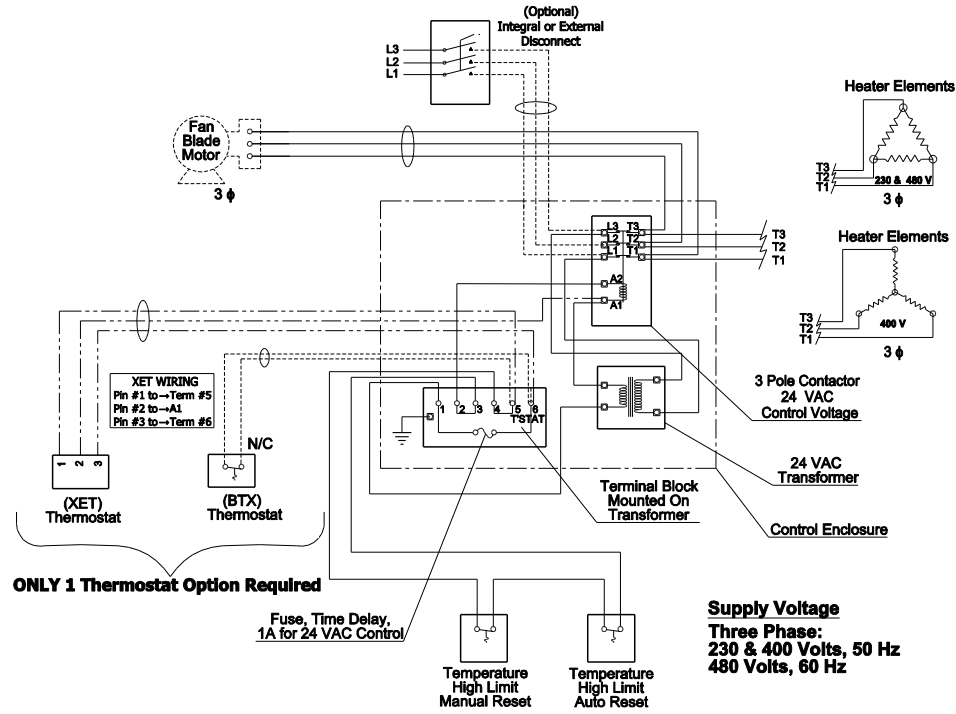
Phase
3 3 Phase

¹ Line voltage must be 230VAC +/- 5% @ 50Hz.
² Line voltage must be 400VAC +/- 5% @ 50Hz.
³ Line voltage must be 480VAC Max @ 60Hz. Motor has a rated voltage of 460VAC +/- 5%.

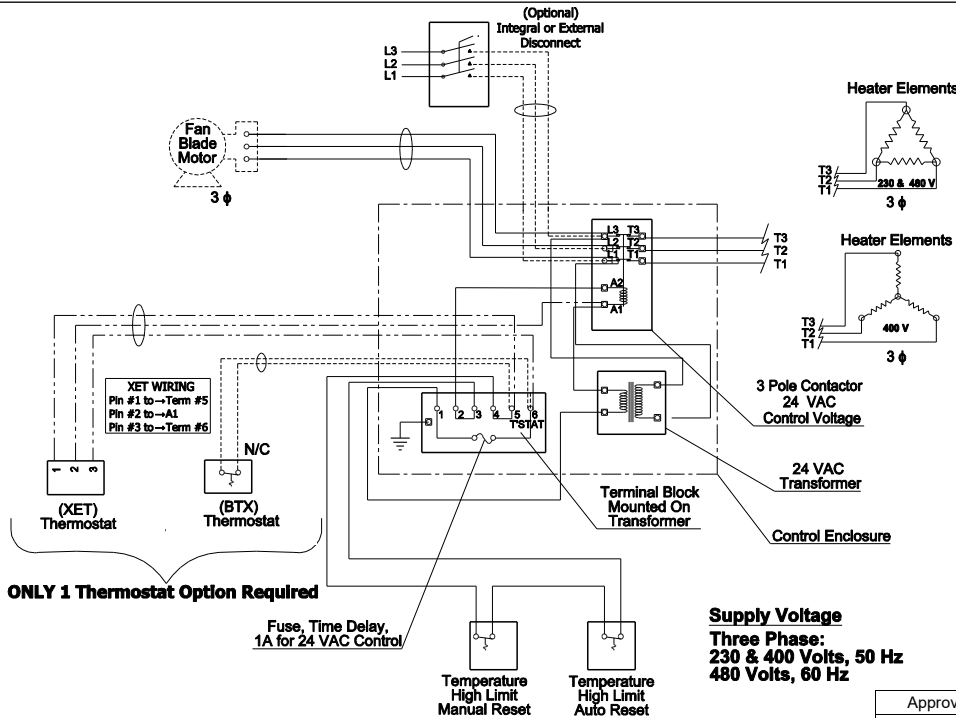
Approval Drawing	AEU1, 16" Fan Size Heater
January 31, 2024	Version 4.0
Hazloc Heaters Inc.	Calgary, Alberta



Wiring Diagram for Standard Fan Operation



Wiring Diagram for Continuous Fan Operation



Approval Drawing	AEU1, 16" Fan Size Heater
January 31, 2024	Version 4.0
Hazloc Heaters Inc.	Calgary, Alberta